

TS3300

MOBILE COMPUTER

DATASHEET



Contact



+44 (0) 161 874 5050



sales@touchstar.co.uk



touchstar.co.uk



7 Commerce Way, Trafford Park M17 1HW



RUGGED BY DESIGN

The **TS3300** is a 'Tour de force' in both design and ingenuity, suitable for the most rigorous use in the most extreme conditions. The **TS3300** provides protection against dust, water and oil ingress and is fully compliant with the ATEX IECEx directive, allowing safe use in potentially explosive environments.

BUILT TO LAST

The robust construction of the **TS3300** has resulted in a mobile computer that is built to last. Unique to TouchStar is the internal silicon mounted chassis, ensuring full protection of the internal electronic components within tough handheld or vehicle mounted applications.

When combined with the high impact polycarbonate plastics, the **TS3300** provides an extremely reliable solution that is designed to last. Not only this, TouchStar provide the long term support to guarantee seamless operation, reduced downtime and a low total cost of ownership.

KEY COMPONENTS PROTECTED
BY AN INTERNAL SILICON CHASSIS



Other design features that make this **TS3300** the most rugged terminal in its class:

- IP54 rating
- Survives 1.5m drops on to concrete
- Operates in wide temperature extremes (-10°C to +50°C)
- High impact polycarbonate rugged touch screen

Our designers have worked hard to achieve an industry-leading rugged design to ensure that the **TS3300** withstands the most extreme environments.

FOR EVERY APPLICATION

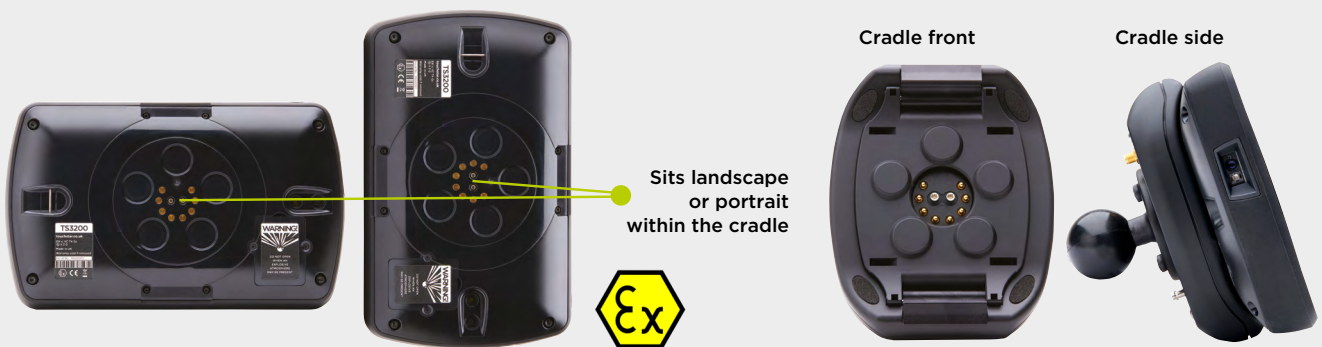
The **TS3300** has been designed with a more efficient logistics operation in mind. Streamlining the data collection process, the **TS3300** integrates the latest high resolution bar code imager, 10M pixel camera and rugged touchscreen. Combined with powerful high-speed processor technology and 3G/4G communications, users are supported with fast and reliable transfer of data.

ULTRA VERSATILE CRADLE SYSTEM

Designed to be versatile throughout all warehouse and logistics operations, the **TS3300**'s innovative cradle system provides a robust, user-friendly mounting solution. The compact cradle design enables easy installation in any HGV, van, forklift truck or on a warehouse trolley.

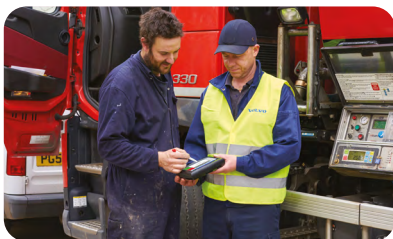
The unique magnetic guidance system facilitates one-handed insertion in either landscape or portrait orientation, offering genuine ease of use and versatility when switching between mounted and mobile operations.

For maximum protection, the incorporation of a positive locking mechanism ensures the **TS3300** is securely held at any angle in environments where high levels of vibration and shocks occur.



PROVEN PERFORMANCE

Front-line personnel demand rugged, reliable mobile computing devices to successfully complete job routines. The **TS3300** offers proven performance in a vast number of demanding industry settings including:



Fuel & Industrial Distribution



Distribution of Hazardous Goods



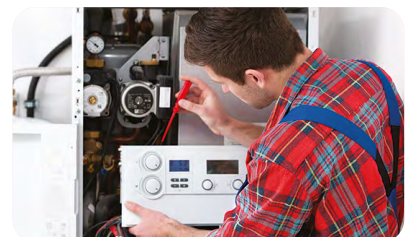
Warehousing



General Haulage & Transportation



Bulk Liquid, Powder & Food Distribution



Field Service

Technical Specification

PHYSICAL

Dimensions: 223mm (W) x 25mm (D) x 131mm (H)
Weight: 800g
Case: Impact resistant, Internal rubber chassis for maximum impact absorption

DISPLAY

7" Colour TFT, Anti-Glare, 16:9 Ratio
WSVGA 1024x600 pixels
LED Backlit
Direct Sunlight Readable IPS

TOUCHSCREEN

High Impact Polycarbonate
Capacitive Option – Glove Friendly – Signature capture

AUDIO

Microphone – Front Facing
Audio Speaker – Front Facing

PERFORMANCE

Qualcomm Octa core
Kryo Gold: quad 2.2 GHz, Kryo Silver: quad 1.843 GHz

MEMORY / STORAGE

3GB LPDDR4 RAM
32GB eNAND Flash – (64GB Option)

COMMUNICATION & INTERFACE PORTS

Micro SD Card
SIM Card Socket

CRADLE INTERFACE OPTION

USB OTG – Standard

INTERNAL RECHARGEABLE BATTERY

Lithium-ion 3.7V, 9000mAh, 33Wh*

COMMUNICATION

WiFi: 802.11 a/b/g/n/ac (2.4HZ/5GHz)
Mobile Broadband: 3G/4G
Bluetooth: 5.0/BLE, Hands Free Audio Interface Support

GPS MODULE PERFORMANCE

Multi-GNSS receiver
GPS, Glonass, and BeiDou
Hot Start < 1s – Cold Start < 35s
NMEA

LTE-FDD MODULE – MOBILE BROADBAND

Cat 6 FDD: Max 300Mbps (DL)/Max 50Mbps (UL)
Cat 4 FDD: Max 150Mbps (DL)/Max 50Mbps (UL)

CAMERA

Rear facing – Sony 10M Pixel

FLASH

LUXEON Flash – Rear only

SCANNER/IMAGER

EM3080W-V2 (option)

OPERATING SYSTEM

Android

OPERATING TEMPERATURE

-10°C to +50°C (charging +10°C to +45°C)

STORAGE TEMPERATURE

-20°C to +55°C

SHOCK

1.5m onto Concrete

ENVIRONMENTAL

IP54

APPROVALS

UKCA / CE / ATEX / IECEx
II 3 G Ex ec ic IIC T5 Gc
II 3 D Ex ic IIIC T105°C Dc

*The TS3300 device, like the majority of devices in the marketplace utilise Lithium-ion technology, due to high capacity, small footprint and no memory effect. However, the batteries are susceptible to ageing process which impairs functionality.

These batteries have an approximate life span of 3 years and around 300 complete charges. After the lifetime is reached the battery cells could swell and cause damage to the device and will require replacement. Please also note storage temperature of these batteries is +55°C, so devices must be removed from cabs when the vehicles is not in use. Recorded temperatures in a cab of a parked vehicle can far exceed +55°C and can lead to swelling. The battery could be a fire hazard if used improperly and has suffered excess temperatures.

Contact



+44 (0) 161 874 5050



touchstar.co.uk



sales@touchstar.co.uk



7 Commerce Way, Trafford Park, Manchester, M17 1HW



touchstar



Securing the Logistics of People and Product